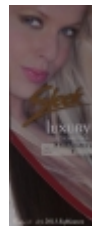


**softcaresilicone.org**

**Softcare Silicone UK Ltd**

## **Sleek European Waves Clipin Human Hair Extensions 100% Luxury**

**Price per Unit (piece): £49.99**



This Sale is for Sleek Luxury European Waves Indian Clip-in 100% Real Human Hair Extensions

( previously known a Top Model )

*Clips are attached to super-soft, 100% human hair with fantastic lustre and shine. Available in the latest colours and*

*shades to select from , clip in extensions are the ideal match for fashionistas who are always on the go.*

*Please select from the drop box at the top of this page the colour and length .*

*Bellow is the details of each set :*

### **Four Piece Clip -in Set**

*Add volume and length in an instant with this four piece set of wefted extensions. Medium sized, metallic snap clips are*

*attached to each weft for the ultimate security.*

*LENGTH: 18 inches/46 cm | WEFT: Double*

*The set contains the following wefts :*

*One Piece : 2 clips attached , 3 Inches wide , 18 Inches Long .*

*One Piece : 3 clips attached , 8 Inches wide , 18 Inches Long .*

*One Piece : 3 Clips attached , 10 Inches wide , 18 Inches Long .*

*One piece : 3 Clips attached . 10 Inches wide , 18 Inches Long .*

*About Top Model*

*Hair extensions are now an established hair trend amongst celebrities, models, fashion magazines and the A-list elite. Today's modern woman wants to look every inch as gorgeous. They too want to achieve the perfect hair as seen on screen and in the magazines. With the introduction of Top Model, the finest most luxurious quality 100% real human hair extensions, full volume, glossy hair is now available to all. Available in over 50 shades, in various lengths and styles, Top Model makes it more possible for anyone to achieve the Top Model look .*

*Only high quality, luxurious hair is selected to achieve the smooth, silky texture of Top Model, designed to blend perfectly with European hair! Choose from a comprehensive range of attachment methods and hair qualities, designed to be used by women who want to stay on trend and discerning hair stylists who work with nothing but the best.*

*If you are looking for a quality and very reliable hair extensions brand that carries World Class assurance, put Top Model at the top of your list.*

*Top Model Quality*

*Customers and hairstylists can have total confidence when using the Top Model range, as the quality controls are second to none. The Top Model philosophy is to offer quality 100% human hair that performs exceptionally. All hair is carefully hand selected, as only the best quality hair can be used to achieve the volume, sheen and vitality which are synonymous with the Top Model range. The hair is processed using production techniques that are ISO 9000:2001 certified, ensuring product consistency and reliability. This uncompromising attitude to quality is part of the allure of the Top Model brand.*

*We offer a free colour exchange , however, returned items should not be opened or used in any way . The item is packaged in a way that you can see the colour and feel the hair without the need to open the item , or remove the cardboard packaging , please kindly note that we can not return or exchange the item if the cardboard packaging is damaged in any way .*

*Please fee free to ask any question .*

[Vendor Information](#)